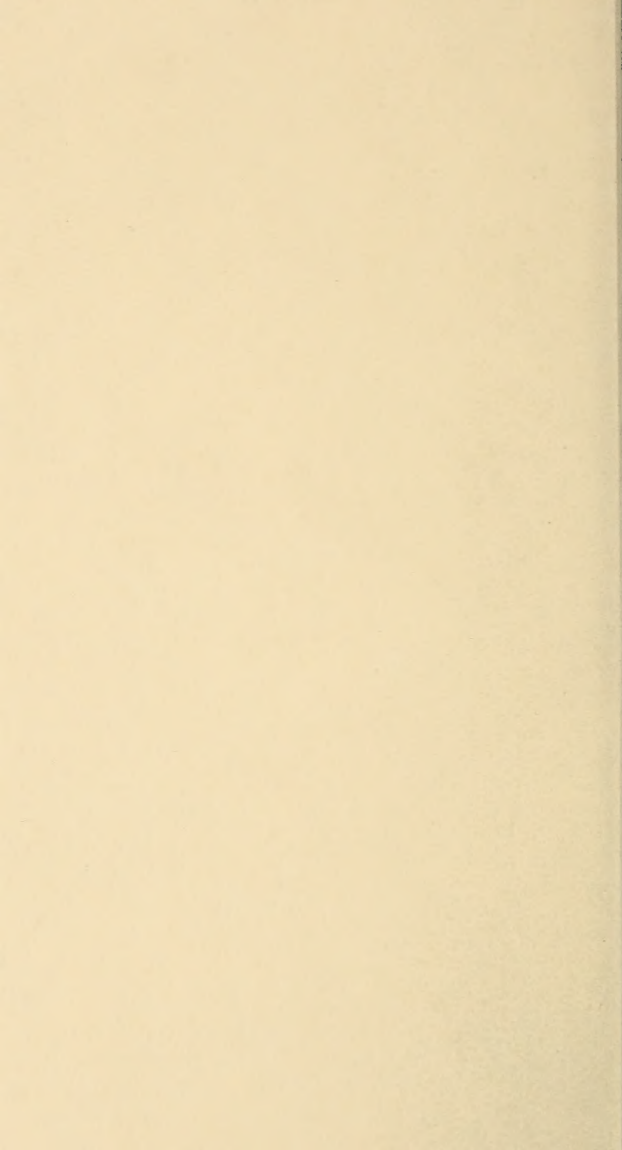


# **Historic, Archive Document**

Do not assume content reflects current scientific knowledge, policies, or practices.



62.81  
SLIP ME OVER A CONVENIENT TACK!  
HOLD ME FOR REFERENCE.

Wholesale price list of peach  
" trees

**FALL, 1903.**

**4,000,000 PEACH TREES.**

**Tennessee**

LIBRARY  
RECEIVED  
★ AUG 20 1920 ★  
U. S. Department of Agriculture.

**Wholesale**

**Nurseries.**

**J. C. HALE, Proprietor,  
WINCHESTER, - TENNESSEE.**

**Western Union Telegraph, Long Distance  
Telephone and Express Office in  
Our Building.**

SEASON 1903

SEPT. 1st.

*Tennessee Wholesale Nurseries,  
Winchester, Tenn.*

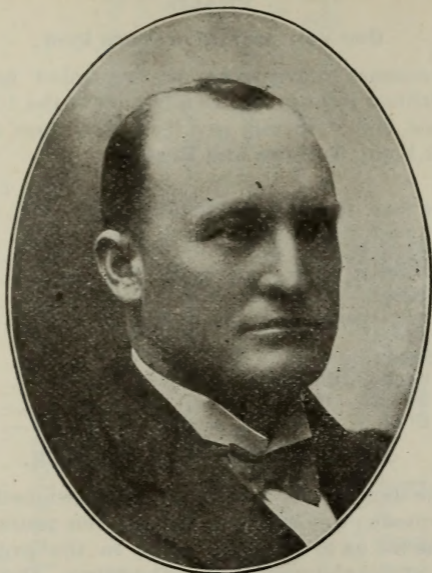
REFERENCES—Bank of Winchester, any Business House in Winchester.



*Guarantee of Genuineness.*

We exercise the greatest of care to keep our varieties PURE and TRUE to name, and we hold ourselves in readiness at all times to replace, on proper proof, all stock that may prove otherwise. But it is mutually agreed between ourselves that we shall not at any time be liable for any amount greater than the original price of the goods.

COMPLIMENTS OF



*J. C. HALE, Proprietor*  
*of*  
**TENNESSEE WHOLESAL NURSERIES,**  
*Winchester, Tenn.*

**Largest Peach Tree Nursery in the World.**

Vice Pres. Bank of Winchester, Director Franklin County Oil and Gas Co.; Pres. Chattanooga Orchard Co., Capital \$40,000, Summerville, Ga; Director Ark. Fruit and Land Co., Clarksville, Ark.

## PEACH.

### One Year on Native Peach Root.

Tennessee grown trees are regarded as the healthiest trees grown in any part of the United States, being entirely free from San Jose Scale Root Knot, Yellows and Rosetta.

|  | Per 1,000 |
|--|-----------|
| 5 to 6 feet, $\frac{3}{4}$ to 1 in. well branched .....          | \$50.00   |
| 5 to 6 feet, $\frac{5}{8}$ to $\frac{3}{4}$ in. " " .....        | 50.00     |
| 4 to 5 feet $\frac{9}{16}$ to $\frac{5}{8}$ in. " " .....        | 45.00     |
| 3½ to 5 feet, $\frac{1}{2}$ to $\frac{9}{16}$ in. well " " ..... | 40.00     |
| 3 to 4 feet, $\frac{7}{16}$ to $\frac{1}{2}$ in. " " .....       | 35.00     |
| 3 to 4 feet less $\frac{7}{16}$ branched .....                   | 30.00     |
| 2 to 3 feet " " .....  | 26.00     |
| 1 to 2 feet, $\frac{1}{5\frac{1}{2}}$ " " .....                  | 20.00     |
| 2 to 3 feet, June Buds, .....                                    | 30.00     |
| 1 to 2 feet, " " .....   | 25.00     |
| 4 to 10 in. " " .....  | 15.00     |

### JUNE BUDS ON NATIVE STOCK.

The demand for June Buds has assumed such enormous proportions in the last few years that it has led us to engage actively in the propagation of Peach trees by June budding. Our success along this line has been very satisfactory, and this season we have increased our June budding three-fold. We will have the largest stock of June Buds this fall and Spring of 1902 that has ever been offered to the trade. We make a specialty of the leading varieties of June budding. Our prospects for a fine grade in June Buds were never better at this season of the year. We are located in the very heart of the healthy Peach region of Tennessee.

Nurserymen and fruit-growers generally will do well to give this matter serious thought before placing their orders.

## PEACHES.

---

The Peach tree requires a well-drained, moderately rich soil—warm, sandy loam is probably the best.

In order to preserve the continued healthy growth of the tree and the fine quality of the fruit, the Peach should have the shoots and branches shortened in every year or two, so as to preserve a round, vigorous head; and the land should not be seeded to grass, but kept in constant cultivation.

The following have been selected as the best including many new varieties, which furnish in succession for over four months, commencing about July 1st:

**Albright's Winter.** A new Peach, originated in Guilford county, N. C. It is of fine size and handsome appearance; color, white changing to light orange; of fine quality; juicy, sweet and rich; clingstone. Ripens late in October, and if properly stored will keep into December. Will probably not be valuable north of Virginia.

**Alexander Early.** Large size, well grown specimens measuring eight inches in circumference; handsome and regular in form with deep maroon shade, covered with the richest tint of crimson; rich and good in quality with a vinous flavor; adheres to the stone; should remain on the tree until fully ripe. Last of June.

**Amelia.** From South Carolina; very large and beautiful, white, nearly covered with crimson; flesh white, juicy, melting, sweet, rich, vinous; one of the best peaches for home consumption. but too tender for long transportation

freestone. Last of July.

**Amsden.** Fruit medium; color red, beautifully shaded and mottled with a very dark red, nearly covering a greenish-white ground; flesh white, with a delicious flavor when ripened on the tree. Middle to end of June.

**Admiral Dewey.** Skin deep orange-yellow, with crimson cheek. Flesh clear yellow to the stone, juicy, melting, vinous; quality very good. Ripens with Triumph.

**Baldwin's Late.** Medium, roundish, oblong; skin greenish-white, with a pale red-cheek; flesh firm, juicy, melting and well flavored, ripe October 5th to 25th; free.

**Belle.** (*Belle of Georgia.*) Very large; skin white with red cheek; flesh white, firm and of excellent flavor. Tree rapid grower, very prolific; fine shipper. Ripe July 5 to 20.

**Bokara No. 3.** Raised from seed procured from Bokara, Asia; has been fruited in Iowa several years and found the hardiest and best peach known there. Is highly recommended by prominent horticulturists, including Prof. Budd and Silas Wilson. Tree has stood 28 degrees below zero with but little injury to tips, and produced fair crops of fruit after 21 below. Fruit large, yellow with red cheek, of good quality, perfect freestone; skin tough; fine shipper. August.

**Brigg's Red May.** Above medium; very highly colored; flesh greenish-white, very juicy, vinous, and of very good quality; adheres somewhat to the stone, of firm texture; tree very prolific. Ripens with the Amsden.

**Chair's Choice.** Origin, Maryland; has no superior in quality and flavor, and for profit is



without a rival; large, yellow, free, rich in color, flesh very firm, and ripens after Smock; great bearer.

**Chinese Free.** Large oblong, skin white, with red cheek; flesh red, firm and well flavored; free from rot, which makes it a very desirable market variety; ripe July 5th to 15th.

**Chinese Cling.** Most popular Southern peach; immense size, oblong, creamy white, with faint flashes of red. August.

**Crawford's Early.** This beautiful yellow peach is highly esteemed for market purposes. Fruit large oblong; skin yellow, with fine red cheek; flesh yellow, juicy, sweet and excellent; productive; free. Last of July.

**Crawford's Late.** Fruit of the largest size; skin yellow, or greenish yellow, with deep red cheek; flesh yellow; productive; one of the best; free. Last of August and September.

**Carman.** Closely following Waddell we have in Carman another Peach of North China type that promises great value. The originator says it is either a seedling of or sister to Elberta; tree of same habit of growth, only has larger and darker colored foliage. Tree hardy and productive, and fruit practically rot-proof, as original tree, standing in low, wet ground, has perfected its fruit two seasons, while other varieties all about have rotted entirely. Carman is described as large, broadly oval in form, pointed; skin yellowish white, dotted and flushed red; flesh of creamy white, slightly tinged red, of a sprightly vinous flavor. *The Rural New Yorker* first described it some years ago as an extra large yellow Peach, like Elberta, only five weeks

earlier; it certainly is of Elberta type, but is not strictly a yellow Peach, neither is it white. Size large, resembling Elberta, an extra fine flavor; skin tough, makes it the great market Peach of its season.

**Capt. Ede.** From South Illinois where it is largely planted; said to be an improved Elberta, ripening ten days earlier. Large, yellow freestone, excellent quality, handsome, good shipper. Early in July.

**Crosby.** Medium size; bright orange yellow, streaked with carmine. On account of its beautiful color and fine quality it commands a ready sale in competition with best standard market sorts. Claimed to be the hardiest of all peaches— Good for home and market. September 10th; free.

**Early Belle.** (*Hiley.*) Very large, skin white, with red cheek; flesh white, firm and of excellent flavor; the fruit uniformly large and showy; tree a rapid grower and very prolific. A seedling of Chinese Cling, originated by Mr. Lewis A. Rumph, Marshalville, Ga. Ripe July 1st to 15th. (New.) Free.

**Early Michigan.** Fruit large size, skin greenish white, nearly covered with dark red, flesh white, melting, juicy and good; very hardy and prolific bearer; ripe June 15th to July 1st. Free.

**Early Rivers.** Large, light straw color, with delicate pink cheek; flesh juicy and melting, with very rich flavor. First of July; free.

**Elberta.** A Georgia cross between Crawford and Chinese Cling; very large, well colored, all things considered the finest yellow freestone in cultivation; no one can go amiss by planting it;

fruit perfectly free from rot, and one of the most successful shipping varieties. July 20th.

**Family Favorite.** Free. Seedling of Chinese Cling, of better color, large, clear, waxy complexion with blush, prolific, firm. Valuable for shipping, canning or drying. Last of July.

**Emma.** Fruit very large; skin golden yellow with red cheek; flesh yellow, fine grain, firm, juicy and highly flavored; tree luxuriant grower and quite prolific; a perfect free stone; one of our most attractive, profitable market varieties; ripe July 25th to August 5th.

**Fitzgerald.** New. From Canada; fruited in Michigan. It is one of the hardiest peaches, both in bloom and tree: very prolific; large size; thick, solid flesh; seed very small; quality one of the best. Its beautiful yellow color, shaded with red, makes it one of the most attractive peaches. Will be a leading market fruit when it becomes fully known. Ripens middle to last of July.

**Foster.** Large deep orange red, becoming very dark red on the sunny side; flesh yellow, very rich and juicy, with sub-acid flavor; earlier than Early Crawford; very handsome; free.

**General Lee.** An improved Chinese Cling; very valuable. August 20th.

**Golden Drop.** This variety has a sort of transparent, golden appearance, rendering it immensely attractive in market, selling for the highest price. Good quality, a very early and profitable bearer; hardy. Medium size. Last of September.

**Globe.** An improvement on Crawford's Late; fruit large, globular, of a rich golden yellow with a red blush; flesh yellow, juicy. August;

free.

**Greenesboro.** Origin, North Carolina. Ripens with Alexander, but much larger. Round; flesh white, very juicy, of good quality; bright red over yellow, highly colored in the sun. Fruited with us this year for the first time. A promising market variety.

**Heath Cling.** Large, oblong, creamy white, slightly tinged with red in the sun; very tender, juicy, melting, very rich and luscious. September 15th.

**Hale's Early.** Fruit medium size; skin clear, smooth, bright, delicately marbled with bright and dark red on the sunny side; flesh very melting, juicy and high-flavored. July 10th to 20th; free.

**Henrietta.** (*Levy.*) The most magnificent yellow cling known; of largest size; mostly covered with bright crimson; hardy, productive, sure bearer, always commands fancy prices; September 25th.

**Hill's Chili.** Medium size dull yellow; tree very hardy, a good bearer; highly esteemed as a market fruit where hardy varieties are a necessity. Last of September.

**Indian Blood.** Large; skin dark claret, downy, with deep red veins; flesh very juicy, vinous and refreshing; August 1st to 15th; cling.

**Kalamazoo.** Large, golden yellow, with crimson cheek; flesh thick yellow, superb quality; small pit. Strong grower, early bearer, hardy and productive. September.

**Lady Ingold.** We introduced this Peach some ten years ago. It originated on a farm adjoining these Nurseries. It is now becoming a great market variety; some of the leading fruit grow-

ers in South Georgia pronounce it the best market variety they have. Fruit medium to large, round; color yellow, covered with bright rich red; flesh yellow, quality one of the best; a clear freestone. Ripens with Mountain Rose.

**Late Rareripe.** Large; pale-greenish yellow, marbled and covered with reddish spots; cheeks dull deep red, mottled with fawn-colored specks; flesh white, but red at the stone: very juicy, melting and of rich, high flavor; very productive. Early in September.

**Lemon Cling.** (*Pineapple Cling.*) Large, oblong, having swollen point similar to a lemon; skin yellow with red cheeks; flesh yellow, firm, juicy and sweet; tree a fine grower. August.

**Lemon Free.** Almost lemon shaped, pointed at the apex; color a pale lemon yellow when ripe; it is of large size, the finest specimen's measuring over twelve inches in circumference; of excellent quality; Ripens after the Late Crawford; is immensely productive.

**Louise.** (*Early Louise.*) Origin same as that of Early Beatrice and Early Rivers; medium size; bright red; melting, juicy and excellent; valuable. Middle of July; free.

**Mammoth Cling.** Resembling Heath Cling, but double in size; originated in Southern Missouri. September 20th.

**Mamie Ross.** A Chinese type; larger and finer in every way than Early Rivers, with which it ripens; very large, white, with a beautiful blush next to the sun; hardy; an immense bearer.

**Mountain Rose.** Large, red; flesh white, rich juicy, excellent; one of the best early peaches, ripening with Troth's Early, and much larger

and finer than that variety; should be in every collection. July; free.

**Nix Late.** A large, late, oblong, clingstone, from Georgia; white, tinged with red; flesh white, of fair quality. October.

**Old Mixon Cling.** Large, pale yellow, with red cheek; juicy, rich and highly flavored; one of the best clingstone peaches. August 20th.

**Old Mixon Free.** Large, pale yellow, with deep red cheek; rich and good; one of the best. August.

**Picquet's Late.** A Georgia variety of large size; yellow with red cheek; flesh yellow, melting, sweet, of the highest flavor; freestone; a valuable acquisition. September.

**Reeve's Favorite.** Fruit very large, round; skin yellow, juicy, melting and excellent; tree hardy and productive; one of the best and most reliable yellow market peaches. Last of July; free.

**Ringgold Cling.** Much larger than Heath, every way an improvement on that popular kind. September 1st.

**"Slappey."** The earliest and handsomest freestone peach grown; ripens at a season when the market is bare of good peaches; a thrifty grower; very hardy and prolific, excellent flavor, splendid keeping qualities, free of excessive rot usually caused by too much rain; no better shipper yet introduced; ripens thoroughly to the seed; very sweet, yellow flesh; color, a clear, golden yellow with dark shades; a beauty. The secret of successful peach growing depends upon the selection of varieties for planting. The "Slappey" ripens from June 15 to July 1; is over and your money made before the general

crop comes. Best peach of its season; free.

**Sallie Worrell.** A new variety from Wilson, N. C.; fruit very large, sometimes measuring fourteen inches in circumference; color creamy white, shaded and splashed and pale to deep red; flesh firm, very juicy and delicious; begins to ripen last of August and continues several weeks; do not think it will do well north of Virginia; freestone.

**Salway.** Fruit large, roundish, deep yellow, with a deep marbled brownish red cheek; flesh yellow, firm, juicy, rich, sugary; a new English variety: a late showy market sort; free; last of September.

**Smock Free.** Fruit large, oval; skin orange yellow, mottled with red; a good market sort. September 15th.

**Sneed.** The most remarkable early peach yet introduced; it ripens a week to ten days earlier than Alexander, and belongs to an entirely different type from Alexander and Hale's Early; it is very distinct in tree and fruit, belonging to the Chinese Cling type; size medium; white with flush on cheek; free.

**Stump the World.** Very large, roundish; skin white, with a bright red cheek; flesh white, juicy and good; free.

**Susquehanna.** One of the handsomest peaches; large, yellow and red; melting rich and good; origin, Pennsylvania; free. September.

**The Champion.** Originated at Nokomis, Illinois; fruit large, beautiful in appearance; flavor delicious, sweet rich and juicy; skin creamy white, with red cheek; freestone. August 15th.

The peculiarity of this great acquisition is its hardiness, and the crowning events in its histo-

ry of its having stood a temperature of 18 below zero in the winter of 1887-8, and produced an abundant crop the following season; and again in 1890 producing a full crop when the peach crop was a universal failure; free.

**Tillotson.** (*Early Tillotson.*) Well preserving of the high favor in which it is held; fruit medium size; skin dotted in the shade, dark, deep red in the sun; flesh whitish, red at the stone, to which it partly adheres; juicy, rich and high-flavored; one of the best early peaches for the South; does not do so well North; middle of July.

**Thurber.** A seedling of Chinese Cling; which it resembles in size and color, but more delicate and highly flavored; originated by Mr. P. J. Berkman, Augusta, Ga.; ripe July 5th to 15th; free.

**Triumph.** Earliest yellow-flesh peach, with good eating and shipping qualities. Ripens with Alexander, blooms late, sure and abundant bearer; strong, vigorous grower. Fruit good size, yellow with red and crimson cheek.

**Troth's Early.** A very early and excellent peach of medium size; whitish, with a very fine red cheek; flesh juicy, sweet and very good; one of the most popular and profitable varieties for early marketing; free; middle of July.

**Victor.** The earliest peach known, ripens 10 days earlier than Sneed. Tree vigorous, compact grower, a regular and immense bearer; flavor very pleasant, sub-acid; clingstone. A seedling of the Chinese Cling, crossed with Spanish Blood, bordering on the Indian Type. Ripened its whole crop of fruit in '97, between



May 8th and 16th. Introduced by Foster & Per-  
tle, of Fruit Smith Co., Texas.

**Wagner.** Very large, yellow, more or less col-  
ored on sunny side; juicy and of fine flavor;  
free; first to middle of August.

**Waddell.** Size medium to large, oblong; rich  
creamy white, bright blush on sunny side, cov-  
ering half of the Peach; flesh firm, rich, sweet,  
melting when fully ripe; freestone; about as  
large as Belle of Georgia and ripens close after  
the Triumph; for family use or for market it is  
equal to any of its season, if not superior; of the  
North China family.

**Waterloo.** A seedling, originated in Water-  
loo, N. Y. Size medium to large, good speci-  
mens measuring nine inches in circumference  
and weighing five ounces; form round with a  
deep suture on one side, color pale whitish-  
green in the shade, marbled red, deepening into  
dark, purple crimson in the sun; flesh greenish  
white, with abundance of sweet, vinous juice;  
adheres considerably to the stone, like Hale's,  
Amsden's, etc. Ripens with Amsden.

**Wheatland.** Large, roundish; skin golden yel-  
low, shaded with crimson on the sunny side;  
flesh yellow, rather firm, juicy, sweet and fine  
quality; tree vigorous. August.

**Wonderful.** This good peach created a re-  
markable furor at the Mt. Holley Fair, of New  
Jersey. In beauty, productiveness and other  
desirable qualities, it is so fine the word "Won-  
derful" unconsciously escapes so many upon see-  
ing it, that it became known at once as that  
"Wonderful peach;" hence that name has been  
accepted for it, contrary to the wishes of the  
owners, by force of circumstances. It is a free-

stone of the richest golden yellow, largely over-  
spread with vivid carmine, and ripens after  
nearly all other peaches.

**Yellow St. John.** Large; flesh yellow, equal  
in flavor to Crawford's; exceedingly valuable  
for an early market variety; free; July.

---

### **PACKING AND PACKING CASES.**

We begin packing October 1st, and continue  
to March 1st. Our packing is personally super-  
intended by the Proprietor. We spare no pains  
in packing so as to insure absolute safety in  
transportation. Usual charges for packing.

### **SHIPPING.**

State how you wish goods shipped, whether  
by freight or express, also route. Where no di-  
rections have been given we use our own judg-  
ment, always looking to the interest of our cus-  
tomer, without assuming responsibility.

### **GRADING.**

We grade carefully by height or caliper. For  
instance, in a grade from four to five feet, four  
foot trees are included, but five foot go into the  
next grade. If plump five foot trees are wanted,  
the order must be for five to six feet. When  
possible, we prefer to send samples to prospec-  
tive customers.

### **CLAIMS.**

All claims must be made immediately on re-  
ceipt of goods, or they will not be allowed.

**NATURAL TENNESSEE PEACH PITS.**

**We make it a business to Collect Wild Tennessee Peach Pits, and usually have a large surplus to offer the trade.**

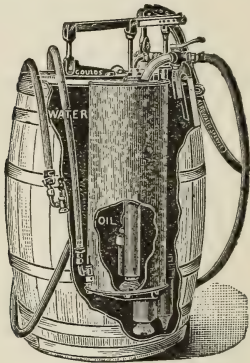
Parties in need of Peach Pits will do well to correspond with us. Prices on application.

**J. C. HALE, Proprietor,  
TENNESSEE WHOLESALE NURSERIES,  
WINCHESTER, TENN.**



*We are agents for the Goulds Celebrated Spray Pumps.*

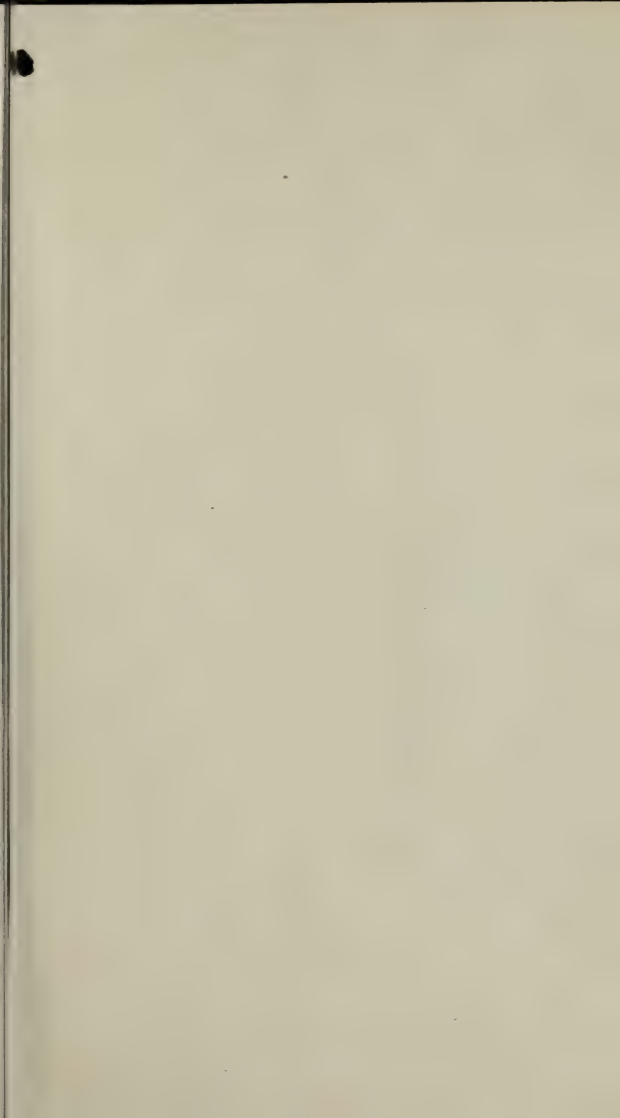
## Combination Knapsack Pump.



**Fig. 1323.**

**Fig. 1323** consists of 5-gallon galvanized tank inside of which is Brass Pump. Is provided with straps for carrying on the back or may be used as a bucket sprayer by removing long lever and operating Pump by handle at top.

*Fig. 1323 as shown in cut with 4 ft. of  $\frac{3}{8}$  in. discharge hose. "Seneca" Nozzle and pipe extension. \$15.00.*





# SIDE LINE

**H**AVING had a great many customers wanting to buy in carload lots, and not being able to handle a full car of peach, I have added, as a side line to my peach business, in order to accomodate this class of trade, a general line of nursery stock. But this season, I only have, to offer, apple and Keiffer pear. I have 250,000 2-year-old apple, extra fine, of a general assortment of varieties; also 50,000 Keiffer pear. Prices on the above will be made upon application. My apple is unusually fine; will be well dug, well graded and free from aphs and other diseases. If you want apple and pear in addition to peach, write me at once for prices.

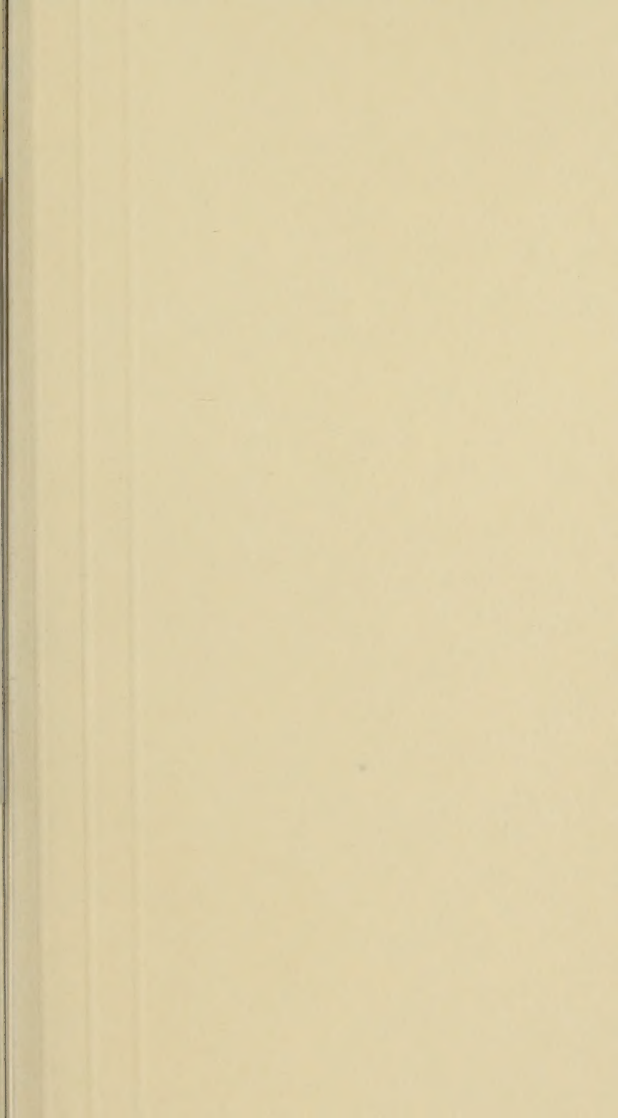
Yours truly,

**Tennessee Wholesale Nurseries,**

**J. C. HALE, Proprietor,**







# STATE OF TENNESSEE.

NASHVILLE, TENN.

## OFFICIAL CERTIFICATE.

No. 14.

TO WHOM IT MAY CONCERN:

This is to Certify, That in accordance with an Act of Assembly, approved April 20, 1901, I have on the 16th, 17th and 18th days of August, 1903, made an inspection of the Nurseries of Tennessee Wholesale Nurseries, at Winchester, Tenn., and that I found the stock in these Nurseries apparently free from the San Jose Scale and all other insects and diseases of a seriously injurious nature.

This certificate is to cover only stock grown in the above named Nurseries, and becomes invalid after August 1, 1904.

GEO. W. MARTIN,  
State Entomologist.